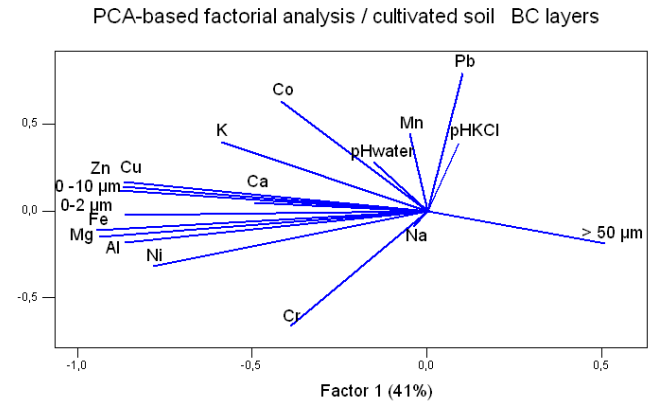
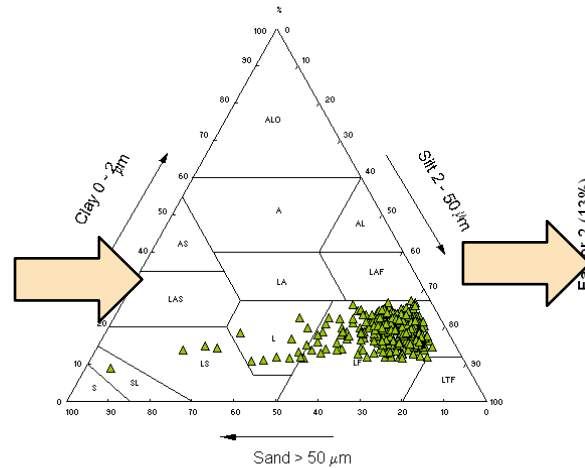
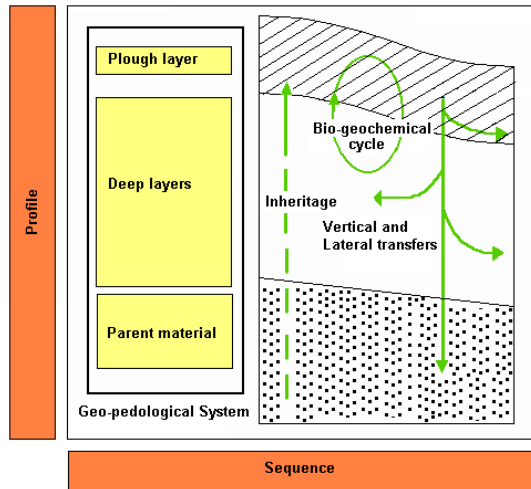
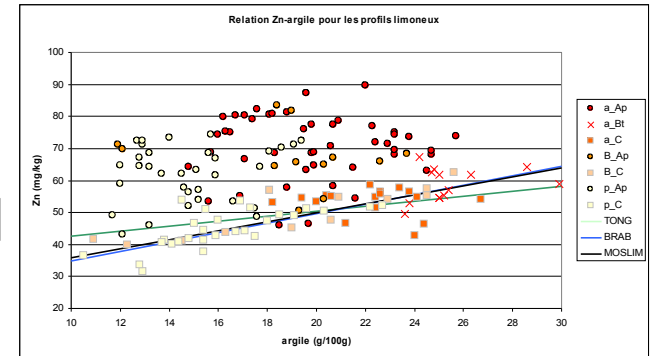
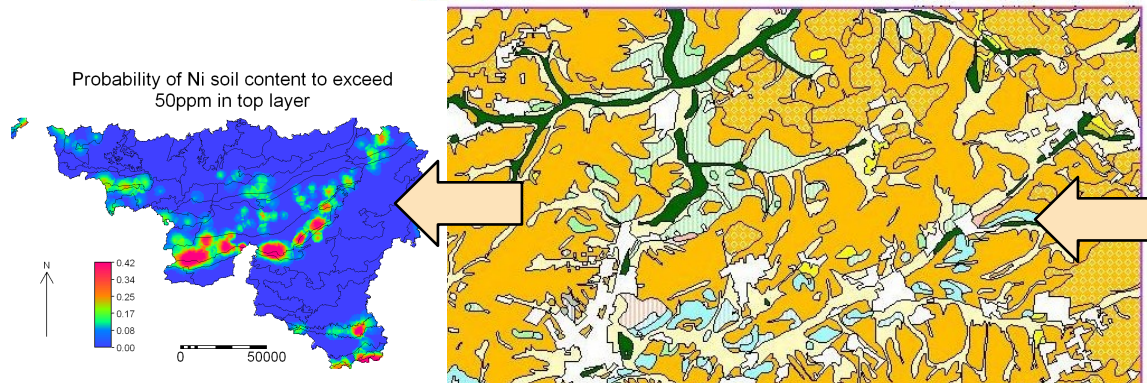


Determinism of the spatial distribution of metallic trace elements in soils

Sampling according to identified soil volumes/organizations, laboratory determinations...



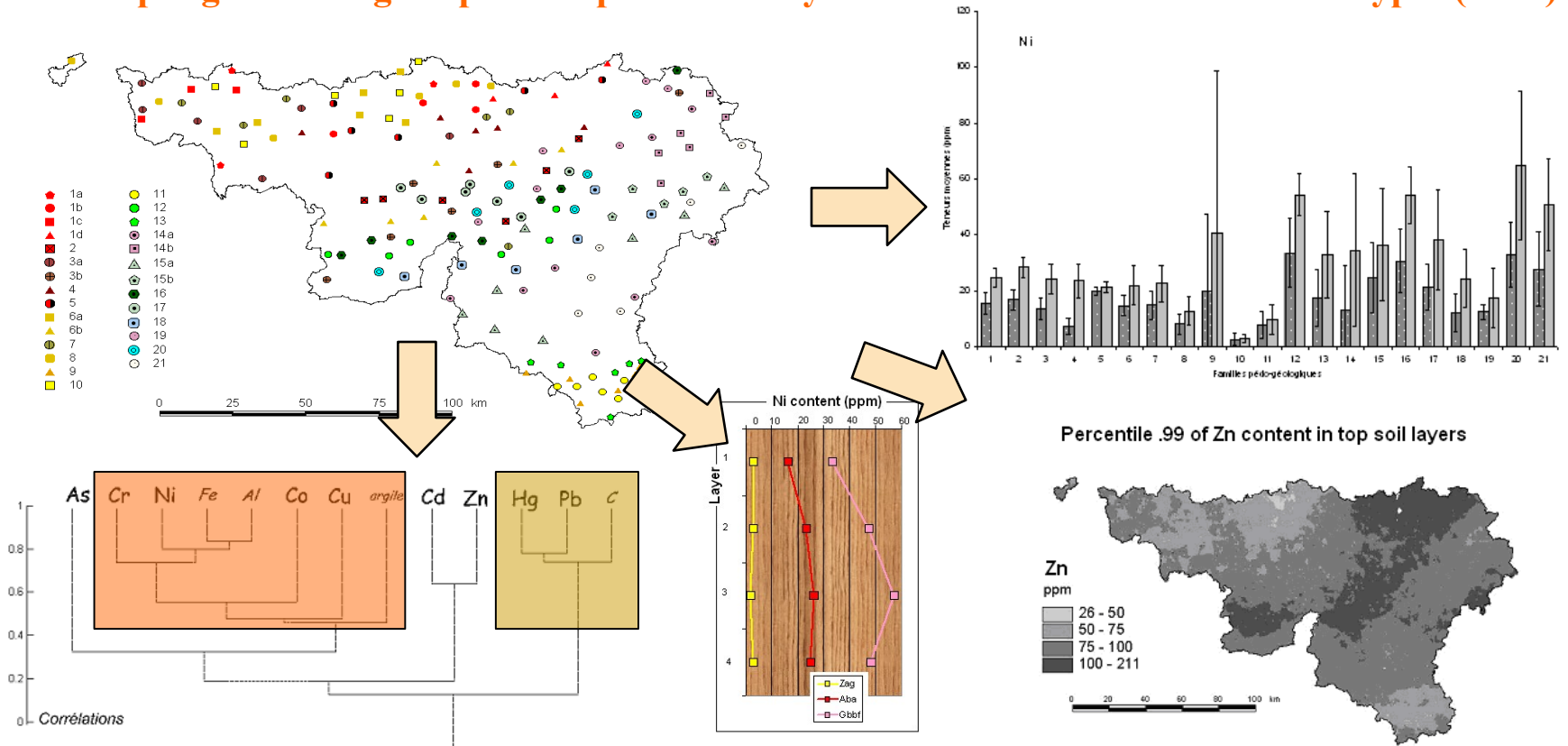
...and statistical tools...



...allowed (i) the identification of main driving factors, (ii) a geochemical « by-mapping », and (iii) assessment of agricultural soils contamination at regional scale.

Background values of MTE contents in soils from the Walloon Region (Contribution)

Sampling according to spatial representativity of soil units and land utilization types (LUT)



163 sites / 21 soil groups / 3 LUT / min. 3 depths

pH, TOC, N, Texture, CEC, Aqua Regia: [Al, Ca, Fe, K, Mg, Na] / [As, Cd, Co, Cr, Cu, Hg, Ni, Pb]